

MEMBER LINE EXTEND



SDS/2

A NEMETSCHEK COMPANY

The new member line extend tools in SDS/2 v2020 allow you to extend beam and column member lines to other beams or columns, without having to use the **Move/Stretch** command. This How/2 will cover the four new tools and how to use them, as well as where to find them to add them to your custom toolbars.

EXTEND MEMBER TO MEMBER

Extend Member to Member allows you to extend or shorten member lines to a selected member line in your model. To run this command first select the member line you want your other members to extend to and right click and click **OK** or use the **Enter** key on your keyboard. Second, select the members that you want to have extended and right click and click **OK** or use the **Enter** key on your keyboard. Once the members have been extended, you will get a prompt to Keep changes. Clicking **No** to this window will put the members back where there were prior to the command being run.

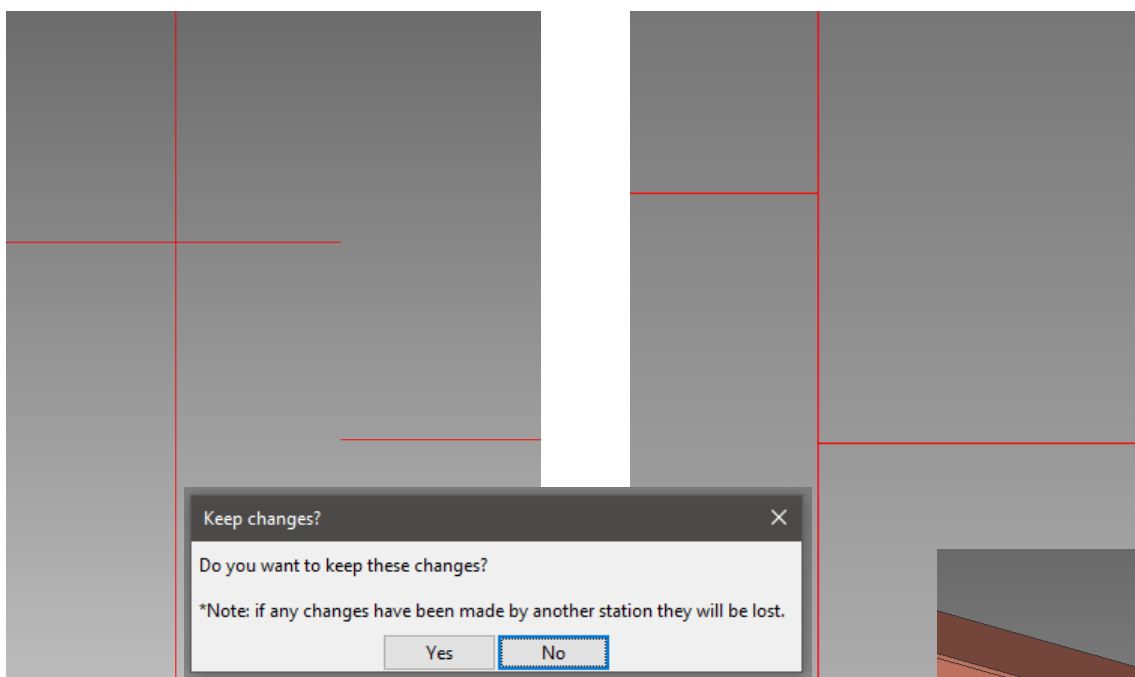
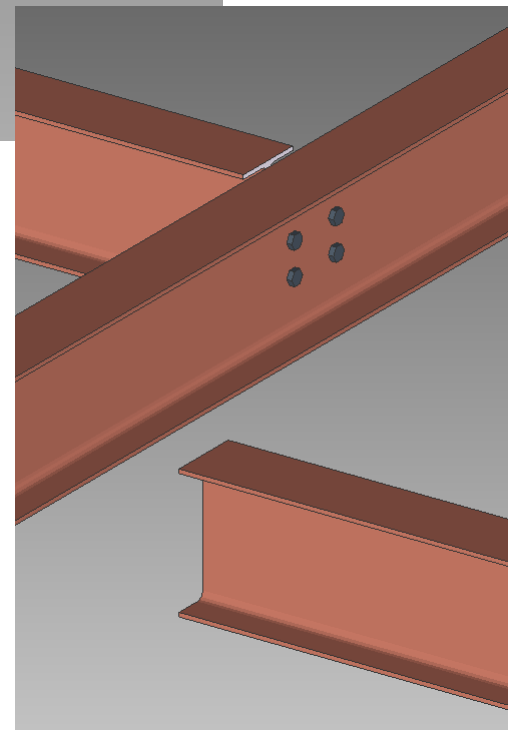


Figure 1: Before and After of Extend Member to Member

This command will not change any end elevations, it will only extend the members to where the first selected member's stick-line plane crosses at that elevation, as shown in Figure 2.

Figure 2:
Extend
Member to
Member at
Different
Elevations



EXTEND MEMBER TO MEMBER ADJUST HEIGHT

Extend Member To Member Adjust Height allows you to either extend or shorten a member to the member line that is selected, like **Extend Member to Member**. The difference between the two tools is this one will change end elevations of the members it is extending to the member line of the member you selected.

You will be prompted for an offset up or down from the member line for how far above or below the member line you want the selected members to be offset.

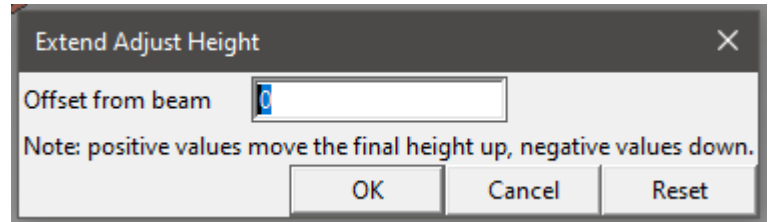


Figure 3: Height Offset Window

Just like the **Extend Member to Member** command, this command will also prompt you to keep changes.

You can run this command on members that are already extended correctly, but you may want to change offset of selected members from a supporting member line, or adjust multiple members at once to change the elevation with reference to a selected member, (see Figure 5).

In Figure 5, the *Extend Member to Member Adjust Height* command was run selecting the sloping ridge beam as the first member to extend to, and picking the other flat beams as the beams to be extended. You can see that setting the offset at 0 moves all the selected beams to the member line of the sloping member at once.

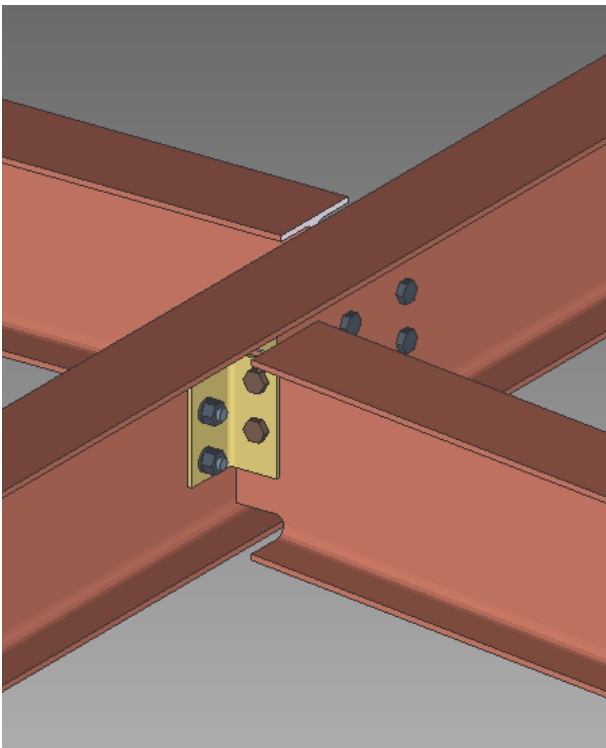


Figure 4: After Extend Member to Member Adjust Height

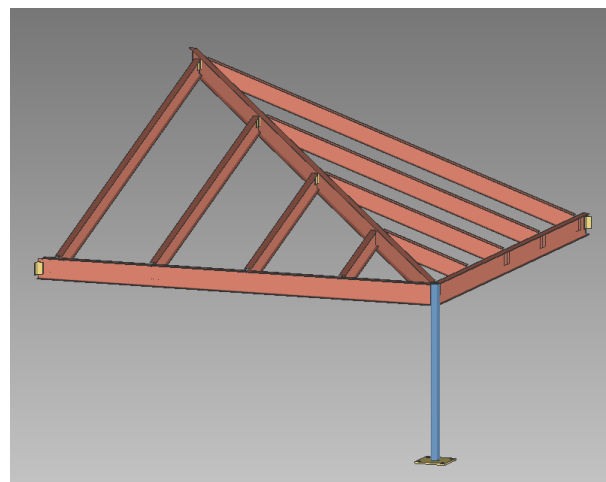
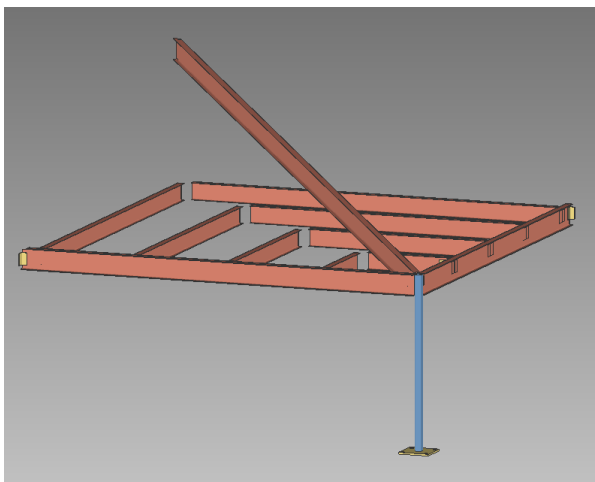


Figure 5: Example Use For Extend Member To Member Adjust Height

EXTEND ALL TO COLUMN

Extend All To Column

allows you to select a single column to which beams near it will be extended. You will pick a column in your model, and then **right-click** and click **OK** or use the **Enter** key, and fill out a *Distance from column* field. Any beam that is within this distance to the column will have its member line extended to the column member line.

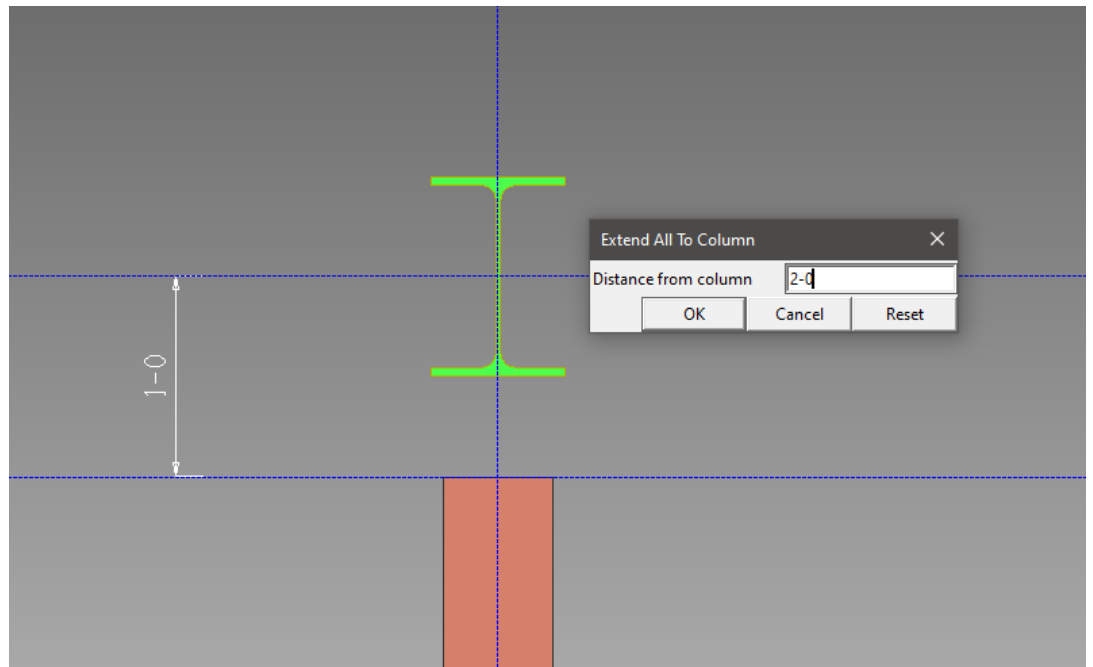


Figure 6: Beam Being Extended to Column

EXTEND ALL SELECTED

Extend All Selected allows you to select columns and beams in the same selection and extend any beam to one of one column that lines up with it within a specified distance. When you make your selection, and then **right-click** and click **OK** or use the **Enter** key, you will be prompted with the *Distance from Member* field. This distance is how far each beam will look to see if there is a column to extend to. In Figure 7, you can see that the *Distance from member* controls which members are extended to the columns.

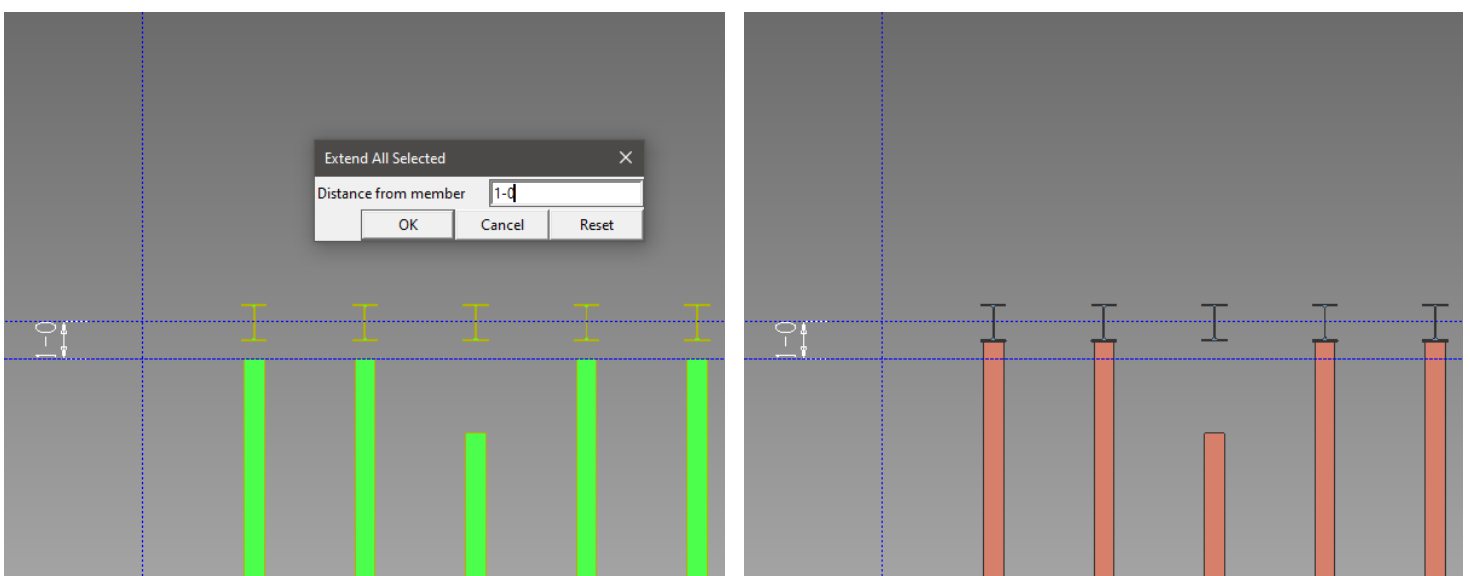


Figure 7: Multiple Members Being Extended With Extend All Selected, Before and After.

TOOLBAR ICONS

The toolbar icons for the extend member line tools can be found in the *Command Group* called *Toolbox*. You can also search for the icons in the search field to the right of the *Command Group* drop-down.

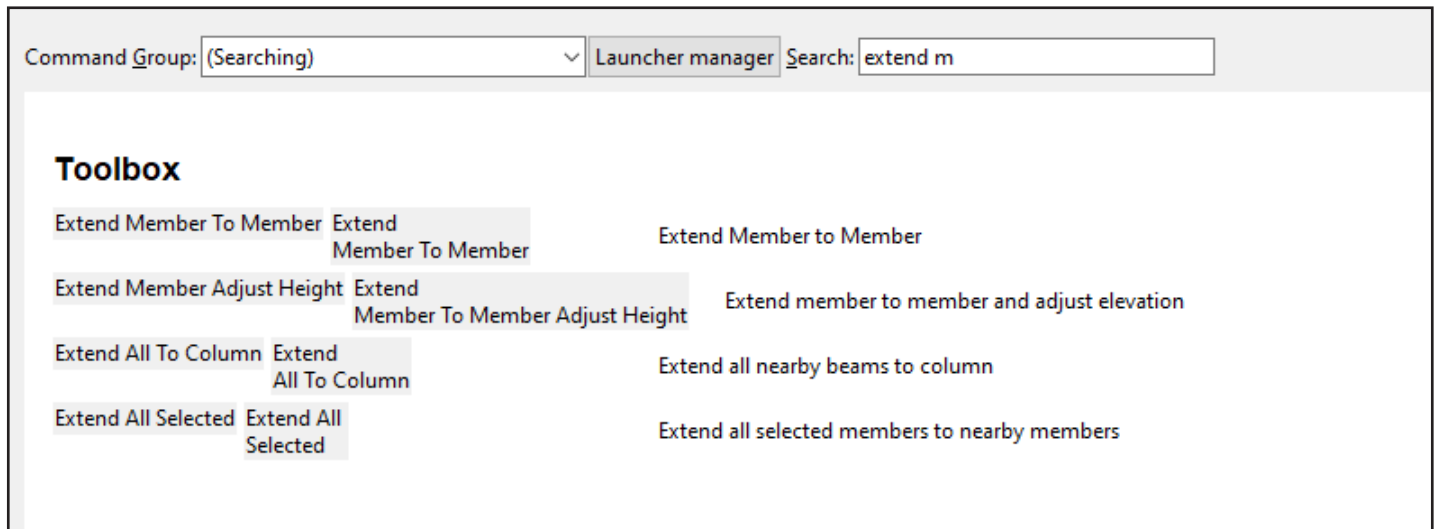


Figure 8: Extend Member Line Toolbar Icons