



Installation

MiTek SidePlate Component for SDS2

SDS2 2020



The MiTek SidePlate Component for SDS2 installer will place the SidePlate Components into your plugins/Toolbox folder. It will also install the Detailing Templates into your SDS2 templates folder. Before starting the MiTek SidePlate Component for SDS2 installation, please ensure that SDS2 2020 is already installed. If SDS2 2020 has not been installed, please contact Customer Support <https://sds2.com/customer-support> to download the appropriate SDS2 release. SDS2 installation instructions will be displayed during the installation process.

To install the MiTek SidePlate Component for SDS2 and Templates, you will need to be logged in as Administrator, or under an account with Administrator rights. Download the MiTek SidePlate Component for SDS2 installer from <https://sds2.com/toolbox/mitek-sideplate-connections>. After the download is complete, double-click on the executable file to launch the installation wizard. **NOTE: All users working on a SidePlate Systems project will need to install the plugin.**

NOTE: WINDOWS MAY ASK IF YOU WOULD LIKE TO ALLOW THE PROGRAM TO MAKE CHANGES TO YOUR SYSTEM. YOU WILL NEED TO ANSWER YES IN ORDER FOR THE INSTALLATION TO CONTINUE.

Installation

The installation will start with a Welcome screen, as shown in Figure 1, stating a wizard will guide you through the installation. Click **Next**.

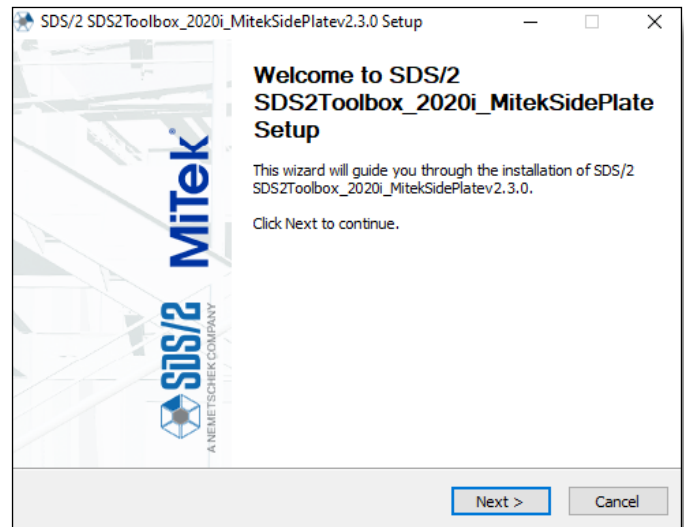


Figure 1: Welcome Screen

After selecting **Next**, the installer should automatically find the path for your *Data files folder*, as shown in Figure 2. If the path is incorrect, select the button **...** to the right and browse to the SDS2 2020 data directory. If the path is correct, click **Next** and then **Install**. The installer will then copy the files to the appropriate location. Once the installer is finished, click **Next** and then **Finish**.

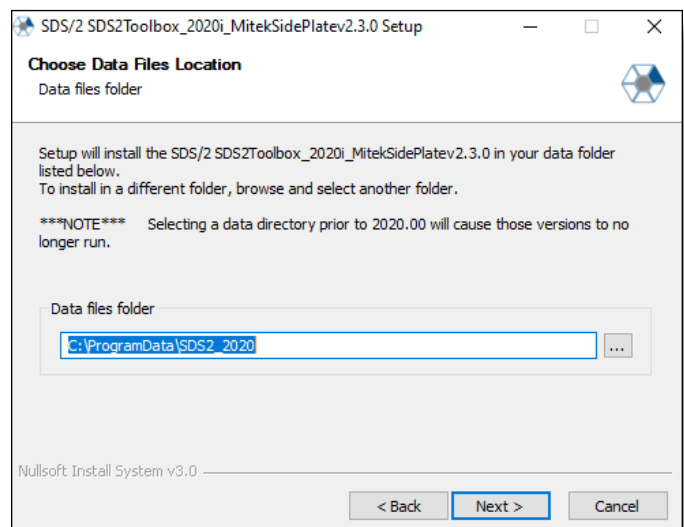


Figure 2: Choose Data Files Location

Copying detailing templates into data directory

By following these instructions, the *Default* folder, which is used when creating new SDS2 projects, is updated to include detailing templates for the SidePlate Components.

In the SDS2 data directory, there is a *detailing* folder containing a *Default* and *SDS2* folder. For the first installation of SDS2 software, detailing templates are copied into both of these folders. However, for additional installations, such as plugins or new versions, only the *SDS2* folder will be updated. This eliminates the possibility of overwriting users' template file modifications in the *Default* folder, which is used when creating new projects. Therefore, you will need to copy the SidePlate Components detailing template from the *SDS2* folder to the *Default* folder in order to use them on new projects.

NOTE: IF YOU ARE MAKING MODIFICATIONS TO THE TEMPLATE FILES, PLEASE CONTACT SDS2 SUPPORT FOR HELP IN COPYING FILES.

To copy detailing template files from the *SDS2* folder to the *Default* folder:

1. Open the *SDS2* folder in Windows Explorer . The default location is:
C:\ProgramData\SDS2_2020\detailing\SDS2.
2. Open the *US* folder, which is inside the *SDS2* folder.
3. Select all of the files and right-click **Copy**
4. Go to the C:\ProgramData\SDS2_2020\detailing\Default\US folder and right-click **Paste**.
5. Replace the existing files.

Copying detailing templates into SDS2 project

By following these instructions, your current job will be updated with the new detailing template. If you have an SDS2 project that was created **prior** to running the MiTek SidePlate Component for SDS2 installer, you will need to follow these steps. Otherwise, you can go ahead and create a new SDS2 project.

To copy detailing template files into a project created **prior** to installing the SidePlate Systems SDS2 component:

1. Change into the SDS2 project.
2. Select **Utility Functions** from the **SDS2 Main Menu**.
3. Select Copy Detailing Templates in Utility Functions.
4. In the *Copy Templates Utility* screen, as shown in Figure 3:
 - a. Select **Template Folder**. The default path should be the correct location.
 - b. Select **Erase existing files from the destination source**.
 - c. Click **OK**.

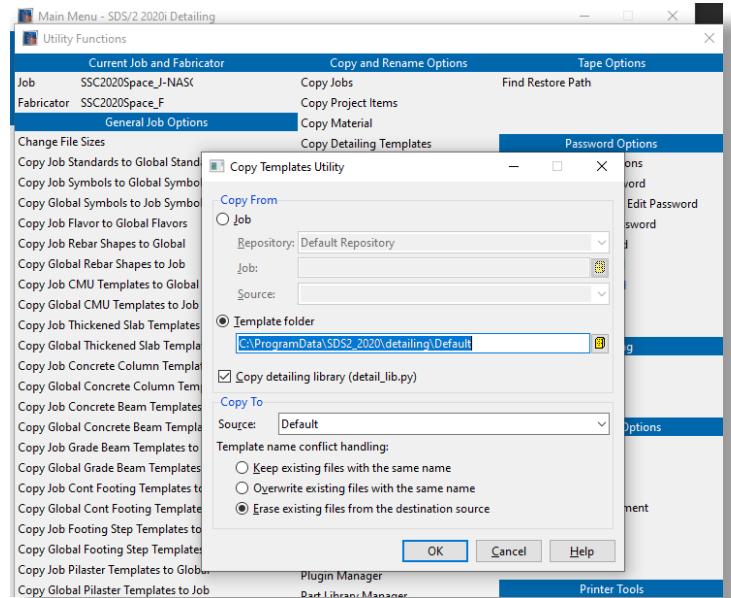


Figure 3: Copy Templates Utility Screen